

SLIDING SYSTEMS

TIGAL

THE HYBRID PULL-SLIDE SYSTEM

TIGAL combining the advantages of a sliding door with the performance of a window. This product is ideal for meeting the challenges of climate change as it has excellent thermal insulation and water tightness compared to traditional sliding systems.

Performance

- 150 mm deep frame module
- Infill thickness 8 - 52 mm
- Built-in threshold 15 mm high
- Dimensions up to (WxH) 2000x2700 mm per vent.
- Frame max. width 6500 mm
- Minimum dimensions (W<H) 750x950 mm per vent
- Max weight 300 kg per vent
- Its patented central sealing system guarantees exceptional water-tightness performance –up to 4 times better than a traditional sliding door.

Design

- Sleek design
- Micro-ventilation
- Concealed hardware
- In open position: all locking systems are black or covered with black ABS covers for a premium finish.
- Concealed drainage on all applications.

Sustainability

- Profiles in Hydro CIRCAL®: prime quality aluminium made with a minimum of 75% recycled end-of-life aluminium (post-consumer scrap). CO₂ footprint of 2.3 kg of CO₂ per kilo of aluminium.
- Thanks to our software TechDesign, it's possible to generate a dynamic EPD according specified dimensions.



Thermal performance: Uw 0,85 W/m²K (Ug: 0,5 W/m²K)

1 leaf + fixed, L x H = 2,30 m x 2,18 m

Air permability: Class A4

Air permability in the micro-ventilation position: Class 1

Water tightness: up to E1200 (1200 Pa)

Wind pressure resistance: Class C5

Acoustic performance: Rw (C;C_{tr}): 45 (-1;-4) dB sound attenuation, double glazing 50 mm: 88,2 Si / 20 / 66,2 Si

Glas thickness: up to 52 mm

Maximum glass load per sash: up to 300 kg

Burglar resistance features: Level RC2 and PAS24

Corrosion resistant hardware: Grade 5 (420h in saline mist)

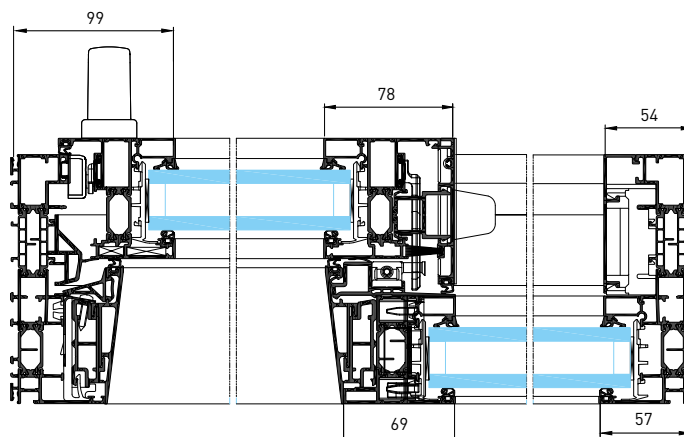
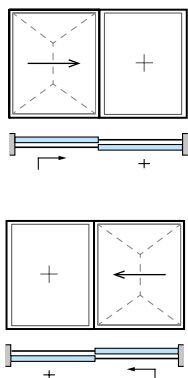
sapa:

By  Hydro

Applications

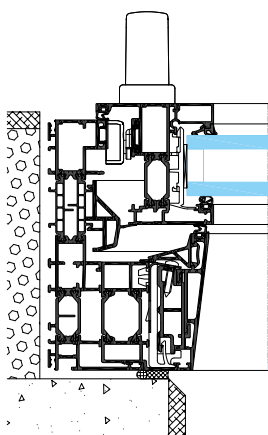
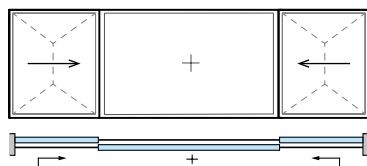
1 rail - inwards opening.

1 leaf + fixed

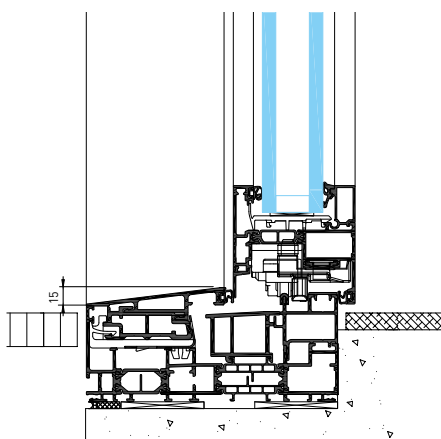


Horizontal section – 1 leaf + fixed

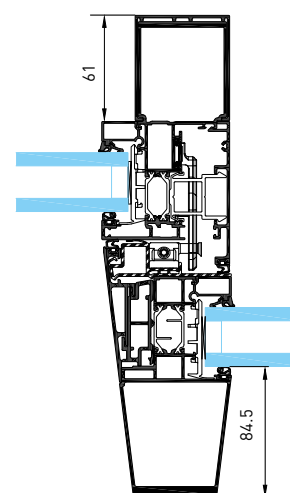
2 leaf + fixed



Horizontal section – concealed sash



Vertical cross-section - opening sash, build-in threshold



Central mullion - reinforced version

Handles for Tigel are available in two different designs.

Handle 160mm Selection square SCZ61005 available in the colours

- Black RAL 9005
- White RAL 9010
- Gray RAL 9006

Stainless steel;

- Handle 136mm Stainless steel SCZ61050
- Handle 160mm Stainless steel SCZ61051
- Lockable handle 160mm Stainless Steel SCZ61058 (RC2 & PAS24)
- Handle 250mm Stainless steel SCZ61049 (water tightness 1200PA)

Hydro Building Systems Sweden AB
Metallvägen
574 81 Vetlanda
www.sapa.se

sapa:

By Hydro